

# ENERGY BLITZ 2008

on

THREADED CONNECTIONS  
&  
BEARINGS



## Product Key Benefits and Advantages: Molykote® Pastes

1000	high load-carrying capacity	enables non-destructive dismantling, even after long use at high temp.	coefficient of friction unchanged in the area of bolts, even after several bolt re-tightening and loosening processes
P-37	highly pure	can be used at temperatures up to +1400°C	avoidance of stress cracks and solder brittleness
P-40	excellent adhesion	good corrosion protection	good water resistance
P-74	metal-free	high load-carrying capacity	low scattering of pre-tensioning force
HSC Plus	enables non-destructive dismantling, even after long use at high temperatures	high load-carrying capacity	due to stated coefficient of friction, defined pre-tensioning forces for bolted joints can be achieved
G-Rapid Plus	low coefficient of friction	high load-carrying capacity	provides emergency running performance
G-n Plus	high load-carrying capacity	prevents seizure and scoring	protection from stick-slip
D Paste	high load-carrying capacity	prevents stick-slip and seizure	excellent protection against galling and fretting corrosion

## Molykote® Anti-Friction Coatings

D-321R	Air-drying	excellent lubricity with avoidance of stick-slip	high ageing resistance
3400A Leadfree	excellent corrosion protection	high load-carrying capacity	good solvent resistance
7400	water-based	environmentally friendly	low coefficient of friction

## Molykote® Greases

Longterm 2 Plus	high load-carrying capacity	suitable for long-term lubrication	good protection against corrosion
Longterm 2 Plus WE	better properties concerning false brinelling and fretting corrosion		
BR2 Plus	suitable for long-term lubrication	good oxidation resistance	emergency running properties
BG-20	high temperature resistance with good load carrying capacity	suitable for high rotational speeds	suitable for long-term lubrication
33	wide service temperature range	high oxidation resistance	compatible with many plastics
41	high temperature stability	high oxidation resistance	non-melting
G-4500	multi-purpose capabilities	complies with FDA regulation	wide service temperature range

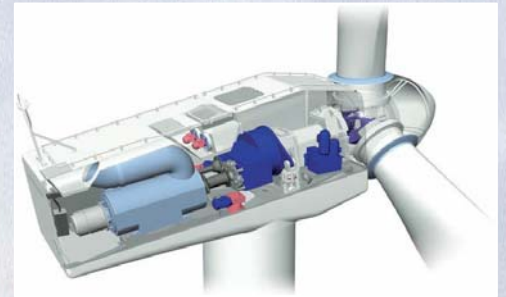
## Dow Corning® Sealants

7093	neutral cure	good adhesion to many substrates	excellent weather resistance
732	acetoxycure	good adhesion to many substrates	low modulus for high movement capability

## Key Applications for Molykote Lubricants Threaded Connections

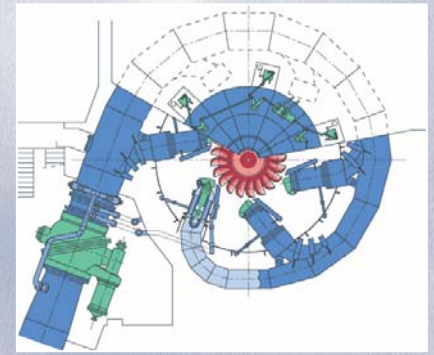
### Wind Turbines

- Blades to hub: **Paste 1000**
- Hub to tower: **G-n Plus**
- Rotor anchor: **D-321R**
- Assembly: **G-Rapid Plus**
- Cooler units/Gearbox: **P-74**
- Shrink Disc: **G-Rapid Plus**
- Shaft hub connections: **G-Rapid Plus, D-321R**
- Tower construction: **D-321R, 7400, 1000**



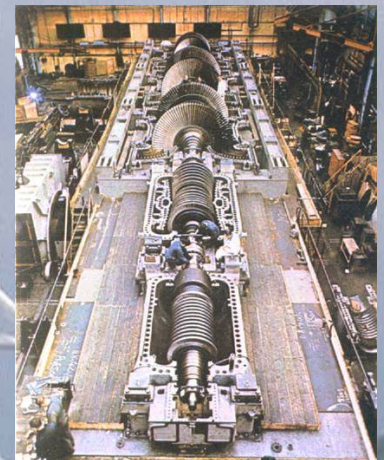
### Water Turbines

- Bolts: **G-Rapid Plus**
- Open gearboxes/Chains: **P-40**
- Bolts lubrication in flanges: **3400, TP-42**



### Gas/Steam Turbines and Accessories

- Older turbine housings: **Paste 1000, HSC Plus**
- Newer turbine housings: **P-37, P-74**
- Flanges: **Paste 1000**
- Steam turbine, sliding element bearings for temperature lengthening (pedestal bearings): **D-321R, 3402C, Longterm 2 Plus, G-n Plus**
- Rust loosening and lubrication: **Multigliss**
- Assembly Aid: **Powder Spray**
- Corrosion protection: **Zink Spray L-0500**
- Threaded connections power stations (where MoS2 can be used): **D-21**
- New press fitting turbine blades: **P-37, P-74**
- Old press fitting turbine blades: **Paste 1000, HSC Plus, G-n Plus**



## Key Applications for Molykote Lubricants Bearings

### Wind Turbines

- Direct Drive - Rotor main bearing: **Longterm 2 Plus**
- Indirect Drive – Yaw and blade bearing: **Longterm 2 Plus, Longterm 2 Plus WE**

### Water Turbines

- Water inlet bearings: **Longterm 2 Plus**

### General Maintenance: **BR2 Plus**

### Gas/Steam Turbines and Accessories

- Bearings on a drum filter and water inlet bearings: **Longterm 2 Plus**
- Fan and blower applications: **BG-20, FB 180**
- Exhaust fan/blade adjust: **41, 44M**
- Conveyer bearings: **BR2 Plus, Longterm 2 Plus**
- Conveyer bearings, very low temp. : **G-4500, 33**
- Bearing Assembly: **G-n Plus, D, P-1600**



## Key Applications for Dow Corning Sealants Wind Turbines

- Outer sealing of the housing: **7093 white**
- Inner sealing of the housing: **7093 grey**
- Shell, typically made out of Fibre Reinforced Plastic (FRP): **732, 7093**
- Gearbox and welded joints: **732**



### LIMITED WARRANTY INFORMATION - PLEASE READ CAREFULLY

The information contained herein is offered in good faith and is believed to be accurate. However, because conditions and methods of use of our products are beyond our control, this information should not be used in substitution for customer's tests to ensure that Dow Corning's products are safe, effective, and fully satisfactory for the intended end use. Suggestions of use shall not be taken as inducements to infringe any patent. Dow Corning's sole warranty is that the product will meet the Dow Corning sales specifications in effect at the time of shipment. Your exclusive remedy for breach of such warranty is limited to refund of purchase price or replacement of any product shown to be other than as warranted.

DOW CORNING SPECIFICALLY DISCLAIMS ANY OTHER EXPRESS OR IMPLIED WARRANTY OF FITNESS FOR A PARTICULAR PURPOSE OR MERCHANTABILITY.

DOW CORNING DISCLAIMS LIABILITY FOR ANY INCIDENTAL OR CONSEQUENTIAL DAMAGES.

Molykote is a registered trademark of Dow Corning Corporation.

© Dow Corning and Molykote are registered trademarks of Dow Corning Corporation.

© 2008 Dow Corning Corporation. All rights reserved.